

# Clarinet B<sup>b</sup>

© เลือดดุ๊กพรวรรณ ©

## INTRO

Allegro

Musical notation for the first staff of the introduction, featuring a treble clef, key signature of three sharps (F#, C#, G#), and a 2/4 time signature. The staff contains a whole rest followed by a half note with a fermata, then a quarter note, and a circled eighth-note triplet. A dynamic marking 'f' is present below the circled triplet.

A-1 "เลือด-๑"

Musical notation for the first staff of section A-1, featuring a treble clef, key signature of three sharps, and a 2/4 time signature. The staff contains a whole rest followed by a quarter note, then a half note with a fermata, and a quarter note. A dynamic marking 'f' is present below the first quarter note.

Musical notation for the second staff of section A-1, featuring a treble clef, key signature of three sharps, and a 2/4 time signature. The staff contains a series of eighth and quarter notes with various chordal accompaniments.

A-2 "เลือด-๑๗"

Musical notation for the first staff of section A-2, featuring a treble clef, key signature of three sharps, and a 2/4 time signature. The staff contains a series of eighth and quarter notes with various chordal accompaniments.

A-3 "เลือด-๑๗"

Musical notation for the first staff of section A-3, featuring a treble clef, key signature of three sharps, and a 2/4 time signature. The staff contains a series of eighth and quarter notes with various chordal accompaniments.

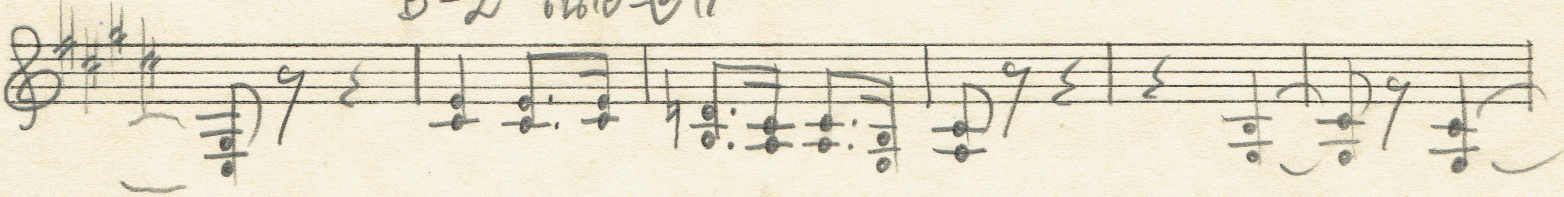
Musical notation for the second staff of section A-3, featuring a treble clef, key signature of three sharps, and a 2/4 time signature. The staff contains a series of eighth and quarter notes with various chordal accompaniments.

B-1 "ระออง-๓"

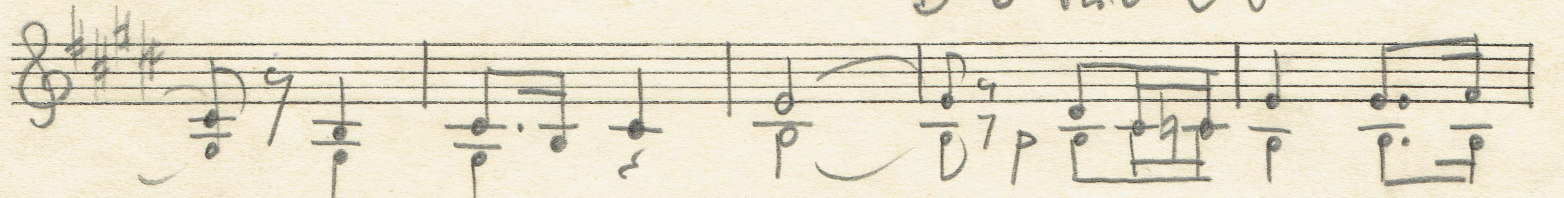
เลื้อยสพรหม



B-2 "ระออง-๓"



B-3 "ระออง-๓"



C-พัก



~~B-4~~



จบ 3 3 3 3 3